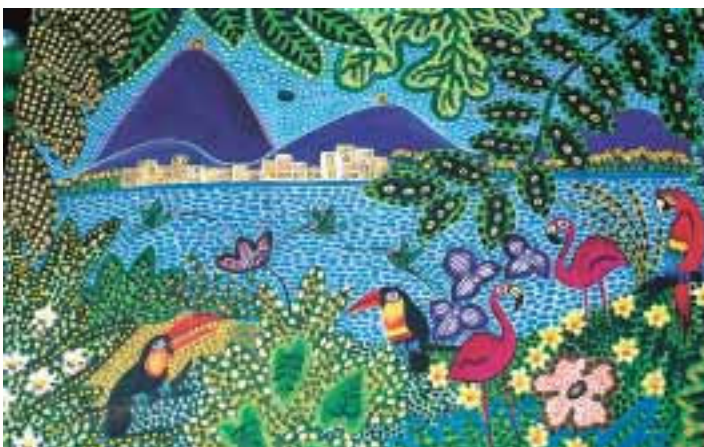


Welcome to Brazil



The Road to Rio 3 Days/2 Nights

Rates Include:

- Accommodations in hotel of choice, tax and service
- Round-trip airport/hotel transfers via private car/van with guide
- Buffet breakfast daily
- Half-day motorcoach tour of Rio's Sugar Loaf

Note: Airfares NOT included and available upon request

Tour Rates Per Person Hotel Selection	Package Rates			Extra Nights			
		DbI	Sgl	Tpl	DbI	Sgl	Tpl
Oceano Copacabana	Low	\$ 239	450	205	\$ 45	89	45
	High	255	465	219	55	95	55
Excelsior Copacabana - Standard							
	Low	\$ 359	685	285	\$105	205	85
	High	379	730	329	115	229	109
Excelsior Copacabana - Deluxe OV							
	Low	\$ 430	805	n/a	\$145	265	n/a
	High	469	859	n/a	160	295	n/a
Praia Ipanema - Superior							
	Low	\$ 359	695	295	\$105	210	90
	High	365	705	305	109	215	95
Praia Ipanema - Deluxe OV							
	Low	\$ 399	775	n/a	\$125	250	n/a
	High	409	795	n/a	130	260	n/a
JW Marriott	All Year	\$ 485	939	n/a	\$169	330	n/a
Sofitel Rio Palace - Superior							
	Low	\$ 445	869	n/a	\$149	298	n/a
	High	465	900	709	159	315	n/a
Sofitel Rio Palace - Deluxe OV							
	Low	\$ 519	1389	485	\$185	375	185
	High	539	1055	505	195	390	195

Note: Low Season = APR-JUN, AUG& SEP, DEC 01-DEC 20, 2007
Rates are not valid during New Year's Eve, Carnival or Easter Week.

Suggested Optional Rio Day Tours

Half-day Motorcoach Corcovado Christ the Redeemer Tour	\$ 49
Half-day Motorcoach Corcovado and Tijuca Forest Jeep Safari	75
Half-day Motorcoach Petropolis Tour	49
Full-day Tropical Island Cruise with BBQ Lunch	69
Evening Motorcoach Samba Show with Dinner	95



Optional Tours Outside Rio

After all of that sizzle, we recommend a quiet getaway to one of the beaches north or south of Rio. Packages include: hotel accommodations, tax and service, daily Brazilian buffet breakfast and round-trip ground transfers.

Buzios (Romantic Getaway) 3-Day Extension

Drive north 2 1/2 hours from Rio to the seaside resort of Buzios, playground to European and Brazilian jet setters. The resort is built in the Portuguese colonial style around an antique fishing village. Follow a day of sunbathing or windsurfing with shopping and a sumptuous seafood dinner. **Rates include round-trip transfers from Rio via shuttle van/bus with a driver.**

Tour Rates Per Person Hotel Selection	Low Season			High Season		
	DbI	Sgl	Tpl	DbI	Sgl	Tpl
Armacao Beach						
Abracadabra (Dlx Room)	\$245	425	225	\$305	535	275
Extra Nights	89	179	79	119	235	105
Casas Brancas (Sup OV)						
Extra Nights	109	215	95	140	280	125
Joao Fernandes Beach						
Colonna Park	\$225	345	215	\$315	505	295
Extra Nights	80	140	75	125	220	115
Galapagos Inn						
Extra Nights	\$245	415	n/a	\$295	515	n/a
	89	175	n/a	115	225	n/a

Note: Low Season: APR 01-JUN 30 & AUG 01-DEC 15. Rates are not valid during New Year's Eve, Carnival or Easter Week.



Romantic Buzios

Portobello

3-Day Extension

Just a one and a half-hour drive south of Rio, this tropical resort offers a resplendent Polynesian-style setting with all beachfront rooms. Enjoy horseback riding, schooner trips and pristine, unspoiled beaches. **Rates are based on seat-in-bus transfers.**

Hotel Portobello**	DbI	Sgl	Tpl
Low	\$319	465	280
Extra Nights	116	188	97
High	\$349	510	338
Extra Nights	131	208	126

Portobello & Paraty

4-Day Extension

After two nights at Portobello, continue down the coast for a night at colonial Paraty, a national monument that offers a variety of inns, art galleries, small boutiques and restaurants.

Hotel Portobello** & Pousada do Paraty	DbI	Sgl	Tpl
Low	\$430	595	399
Extra Nights	30	54	29
High	\$499	640	415
Extra Nights	44	80	44

**Rates include breakfast and dinner daily



Optional Tour Extensions in Brazil

Explore Brazil's other intriguing cities. All you need is a Brazil Airpass and your imagination. Packages include: hotel accommodations including tax and service, daily Brazilian buffet breakfast, round-trip ground transfers and sightseeing as specified.

Ouro Preto

3-Day Extension

When you enter Ouro Preto, you will feel as though you have traveled back in time, to land in one of the most beautiful colonial towns in the world. Ouro Preto was home to the famed 18th century sculptor, *Aleijadinho*, and houses much of his work. It has been declared a world treasure by UNESCO. You will love wandering the quaint cobblestone streets and staying in a charming colonial inn.

Package includes private car transfers from Belo Horizonte Airport.

	Dbi	Sgl	Tpl
Pousada do Mondego			
Basic Package	\$449	895	389
Extra Nights	92	155	77



Iguassu Falls

2-Day Extension

Imagine over 250 separate waterfalls tumbling over a horseshoe precipice of over two miles. This is thundering Iguassu Falls, truly one of the world's greatest natural wonders. We highly recommend you also tour the Argentine side of the falls.

Package includes a half-day, self-guided walking tour of the Brazilian side of the falls.

	Dbi	Sgl	Tpl
Tropical Hotel Das Cataratas			
Standard	\$205	390	n/a
Extra Nights	145	289	n/a
Superior	\$229	435	189
Extra Nights	165	330	139
Deluxe	\$259	489	210
Extra Nights	190	385	160



Brasilia

2-Day Extension

Hewn out of the vast central plains of Brazil, Brasilia was declared the nation's capital in 1956 by President Kubitschek, and on April 21, 1960 the federal government of Brazil was officially moved from Rio to Brasilia. The most impressive buildings of this modern city were designed by Oscar Niemeyer, Brazil's famed architect and sculptor. **Half-day city tour is included.**

Tour Rates Per Person Hotel Selection	Fridays & Saturdays			Sundays-Thursdays		
	Dbi	Sgl	Tpl	Dbi	Sgl	Tpl
Carlton	\$162	275	127	\$179	305	135
Extra Nights	60	105	50	77	137	59
Kubitschek Palace	\$170	315	150	\$175	359	166
Extra Nights	70	145	75	95	190	90

Dawn over Ouro Preto



TAM Brazil Airpass \$560 — See more of Brazil!

Travel in Brazil may be via the popular Brazil Airpass, which allows for travel within the country on TAM Airlines (JJ) for a maximum of 21 days, permitting up to four coupons and four stopovers. It is available only to non-Brazilian residents and **must be purchased outside of Brazil prior to departure** in conjunction with an international air ticket. Passport numbers, home address and international ticket numbers are required at the time of booking.

Note: EcoAdventures charges an additional \$50 per person handling fee.



The many colors of Brazil

Salvador da Bahia

3-Day Extension

Discover Brazil's historic capital, founded in 1549 on the hills overlooking All Saints Bay. Formerly notorious for African slave trade, today it is a center for Afro-Brazilian culture and history, alive with unique costumes, cuisine, music and dance.

Half-day historical tour is included.

Tour Rates Per Person Hotel Selection	2007			2008		
	Dbi	Sgl	Tpl	Dbi	Sgl	Tpl
Tropical da Bahia (Superior Room)	\$189	349	170	\$210	389	189
Extra Nights	45	85	35	50	90	40
Tropical da Bahia (Jr. Suite)	\$235	435	210	\$260	485	235
Extra Nights	65	129	55	70	140	60

Note: Rates are not valid during New Year's Eve, Carnival or Easter Week.



Pristine beaches of Recife

Recife & Olinda

3-Day Extension

Recife gets its name from the reefs which protect its golden beaches. Colonial heritage abounds in its architecture, quaint shops and dramatic churches. **The package includes a half-day tour of neighboring Olinda** with its 18th century buildings, creative murals and brilliantly-painted doorways.

Tour Rates Per Person Hotel Selection	2007			2008		
	Dbi	Sgl	Tpl	Dbi	Sgl	Tpl
Blue Tree Caesar Towers	\$145	275	115	\$160	305	135
Extra Nights	36	71	30	40	77	39
Atlante Plaza	\$189	345	159	\$215	399	175
Extra Nights	58	105	52	67	125	60

Note: Rates are not valid during New Year's Eve, Carnival or Easter Week.