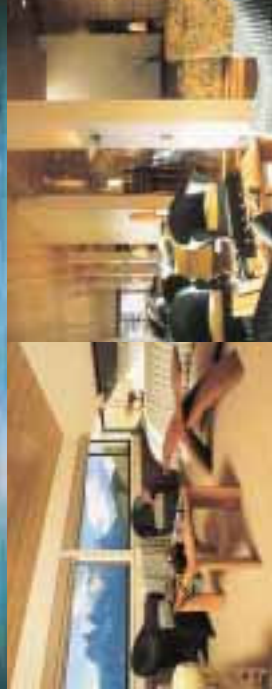


explora EN ATACAMA



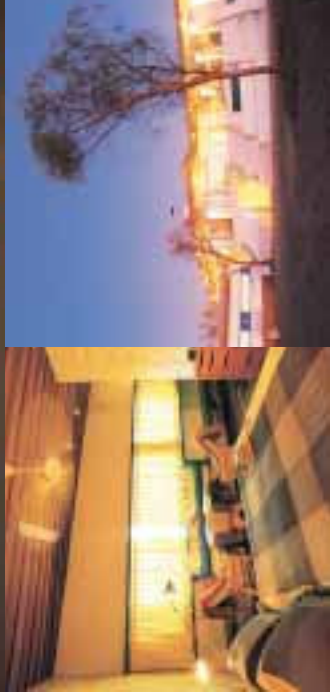
explora IN ATACAMA is located 1600 km north of Santiago de Chile. Between the Pacific Ocean and the Cordillera de los Andes, Atacama is an immense extension of land and mystery. Desert and oasis have been moments of repose and change for pre-Columbian Andean cultures of South of America. Cordilleras, volcanoes, saltflats and hot springs add splendor to culture.



explora EN PATAGONIA



explora IN PATAGONIA is in the heart of Torres del Paine National Park in the Chilean Patagonia, 400 km north of Punta Arenas. It is a 600 thousand acres natural park full of life and beauty. It is considered one of the most beautiful and unique in the world because of the variety and richness of its ecosystem. Was declared Biosphere's Reserve by UNESCO in 1978.



C H I L E

explora en atacama

RATES 2007 / 2008

PROGRAM	# NIGHTS		# NIGHTS		# NIGHTS	
	SMALL DOUBLE	LARGE DOUBLE	SMALL DOUBLE	LARGE DOUBLE	SMALL DOUBLE	LARGE DOUBLE
Adult	2,200	1,340	3,020	1,200	3,000	2,500

Family Room (up to 10 guests)	1,200	800	1,600	800	2,000	1,000
Extra Bed (up to 12 years)	300	300	400	400	500	300

Special Christmas & New Year program

- Special rates for participants up to 10 years old accompanying their parents are subject to availability.
- Over 100 free children's up to 12 years old staying in our private rooms. Maximum 10 children per room.
- Facilities equipped for children above 12 years of age.
- Family and group rates, valid in U.S. dollars.
- Rates in U.S. dollars are the nearest according to rates 1:1, 075 and 1:100 guests who are foreigners, not residents of Chile and are in adults.
- Rates valid until August 31st, 2008.

explora en patagonia

RATES 2007 / 2008

PROGRAM	# NIGHTS		# NIGHTS		# NIGHTS	
	SMALL DOUBLE	LARGE DOUBLE	SMALL DOUBLE	LARGE DOUBLE	SMALL DOUBLE	LARGE DOUBLE
Adult	4,800	3,110	5,000	4,400	6,210	5,100
Family Room (up to 10 guests)	3,100	2,300	4,070	3,070	5,140	4,340
Extra Bed (up to 12 years)	3,000	2,170	4,100	3,090	5,110	3,800

Family Room (up to 10 guests)	1,800	800	2,400	1,100	3,200	1,800
Extra Bed (up to 12 years)	400	400	600	600	800	600

Special Christmas & New Year program

- Special rates for participants up to 10 years old accompanying their parents are subject to availability.
- Over 100 free children's up to 12 years old staying in our private rooms. Maximum 10 children per room.
- Facilities equipped for children above 12 years of age.
- Family and group rates, valid in U.S. dollars.
- Rates in U.S. dollars are the nearest according to rates 1:1, 075 and 1:100 guests who are foreigners, not residents of Chile and are in adults.
- Rates valid until August 31st, 2008.